



We will provide

**up-to-the-minute**

tourist information for Kinokawa City.

Kinokawa City Tour Map attached.

# Kinokawa City Tourist Information Center has opened!

General Incorporated Association  
Kinokawa Fruits Tourism Bureau's Concept

「With ease. Stay healthy in body and mind.  
Luxurious and rich smile. Year-round fruit experiences.」

## **With ease**

The city where fruit can be easily and casually tasted.

## **Stay healthy in body and mind**

The city where both residents and visitors can create  
new experiences, eat and socialize to  
build healthy bodies and minds.

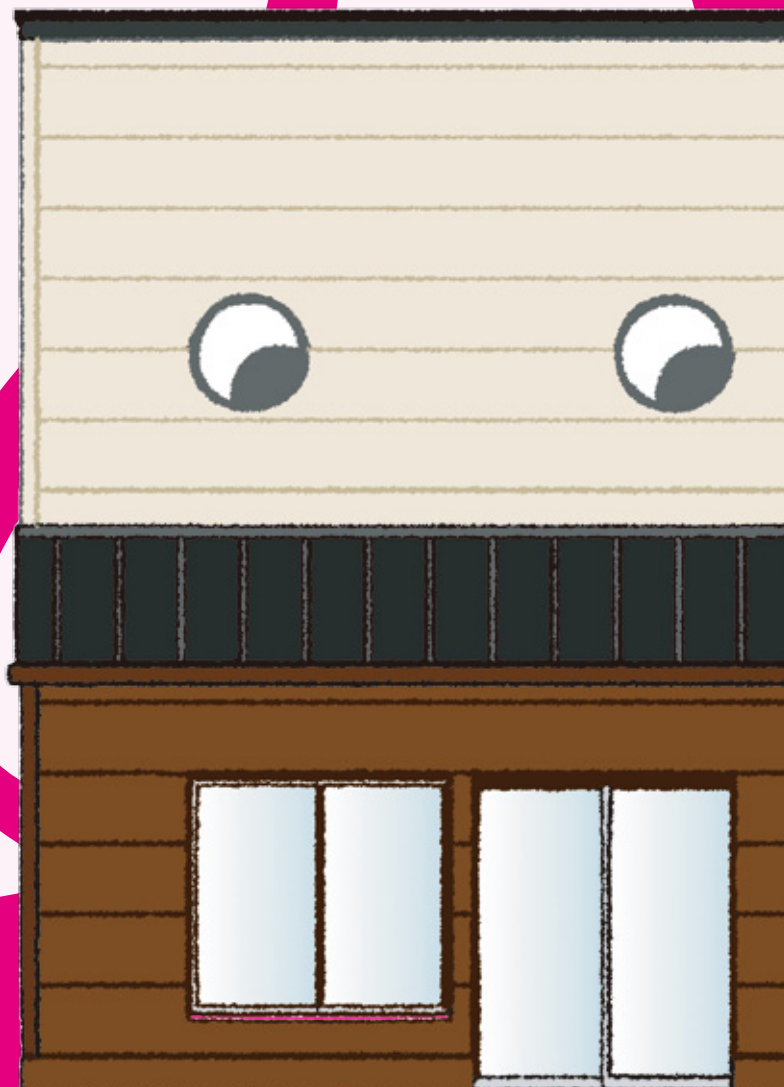
## **Luxurious and rich smile**

The city where people can smile naturally,  
realizing that they are always surrounded by the best **fruits**.

## **Year-round fruit experiences**

The city where you can enjoy fruits anytime, anywhere,  
in a variety of ways.

Visit the Kinokawa City  
homepage for more information! ▶

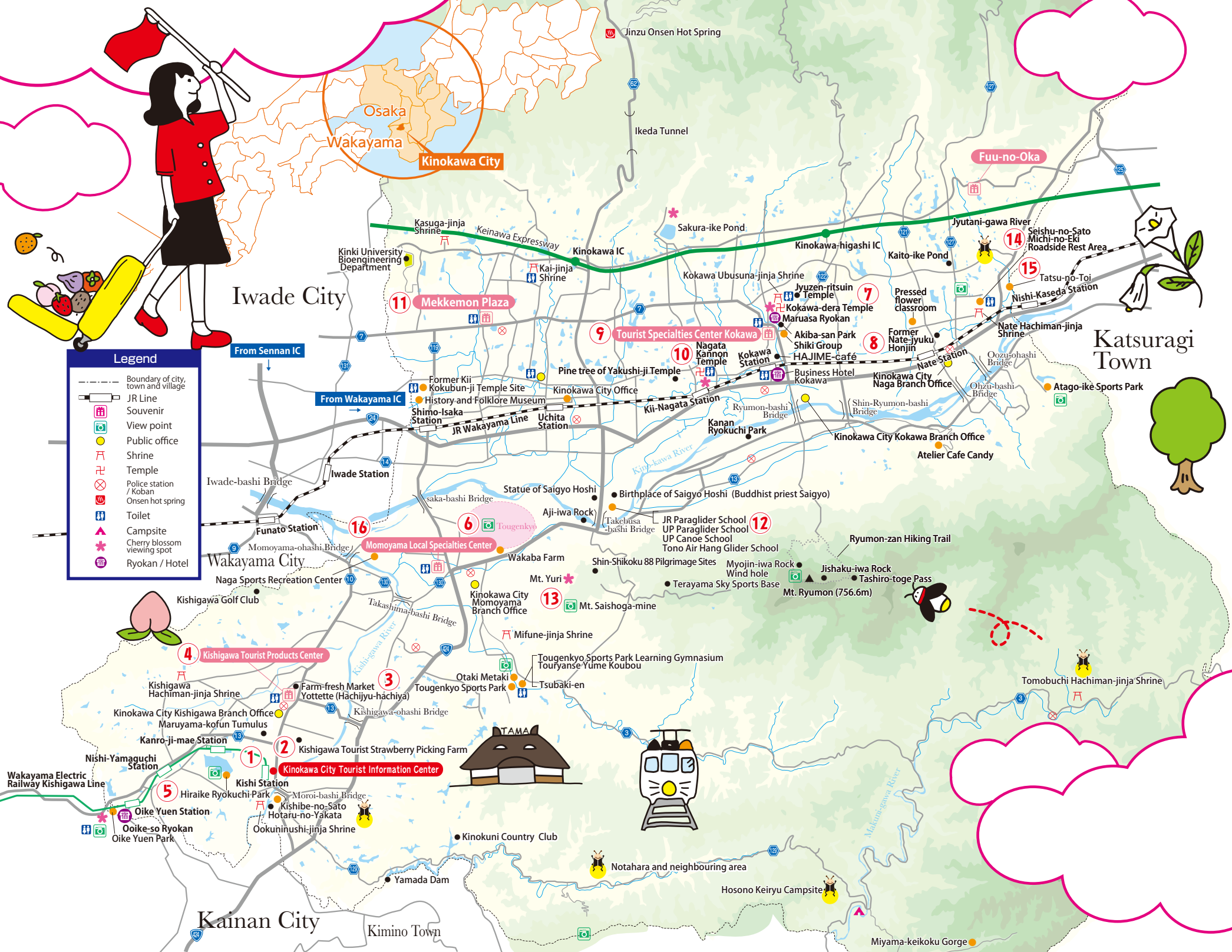




# Kinokawa City Tour Map

## KINOKAWA CITY MAP

In Kinokawa City, people are able to get among fruit and nature. Use the Kinokawa City Tour Map to discover the recommended spots to visit.



### Enjoy the walking course. (About 4 hours 30 minutes)

After cat station master Tama welcomes you at the Kishi Station, enjoy strawberry picking, go shopping and have a buffet lunch at the farm-fresh market. After that, you can make the most of your time in the city of Kinokawa by taking a stroll along the banks of the largest pond in Wakayama.

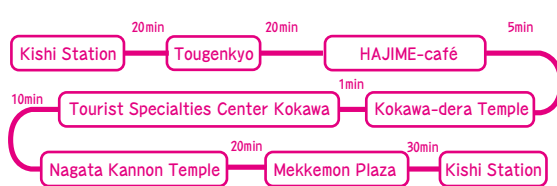


※ Open (February 1 - Mid-May)



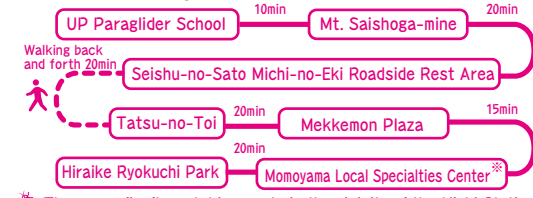
### Refreshing cycling course. (About 5 hours)

Hire a rental cycle in front of the Kishi Station, and ride around the city. While looking at Tougenkyo and the Kinokawa River, you're able to experience the historical setting, as well as the refreshing natural environment. Enjoy shopping at the farm-fresh market where you can find fresh vegetables and fruits.



### Enjoy the sightseeing-by-car course. (About 7 hours)

The paragliding site is one of the largest in the Kansai area. Take off from an altitude of 300m and experience a bird's-eye view of Kinokawa City. After enjoying the farm-fresh buffet at the roadside rest area, you can buy the local specialty "Arakawa-no-Momo Peach" as a souvenir. To top it off, you can then enjoy watching fireflies in the evening.



There are firefly-watching spots in the vicinity of the Kishi Station.  
※ Open every day from June to the O-bon Festival!



① Kishi Station



② Kishigawa Tourist Strawberry Picking Farm



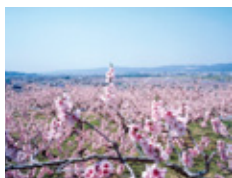
③ Farm-fresh Market Yottette (Hachijyu-hachiya)



④ Kishigawa Tourist Products Center



⑤ Hiraike Ryokuchi Park



⑥ Tougenkyo



⑦ Kokawa-dera Temple



⑧ HAJIME-café



⑨ Tourist Specialties Center Kokawa



⑩ Nagata Kannon Temple



⑪ Mekkemon Plaza



⑫ UP Paraglider School



⑬ Mt. Saishoga-mine



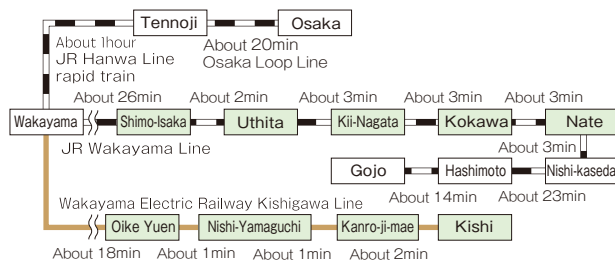
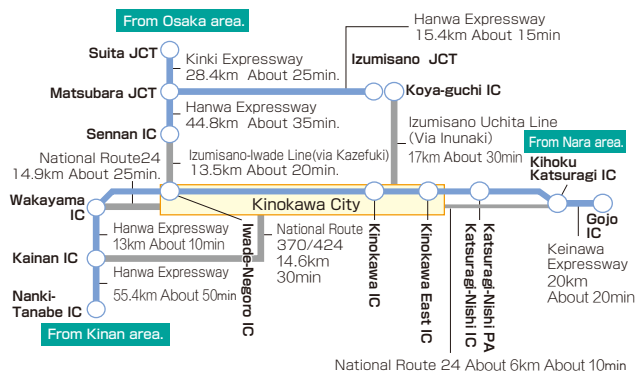
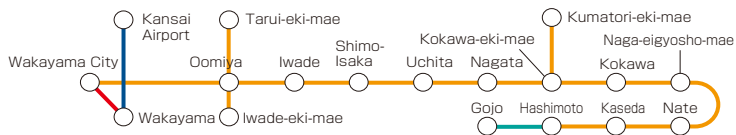
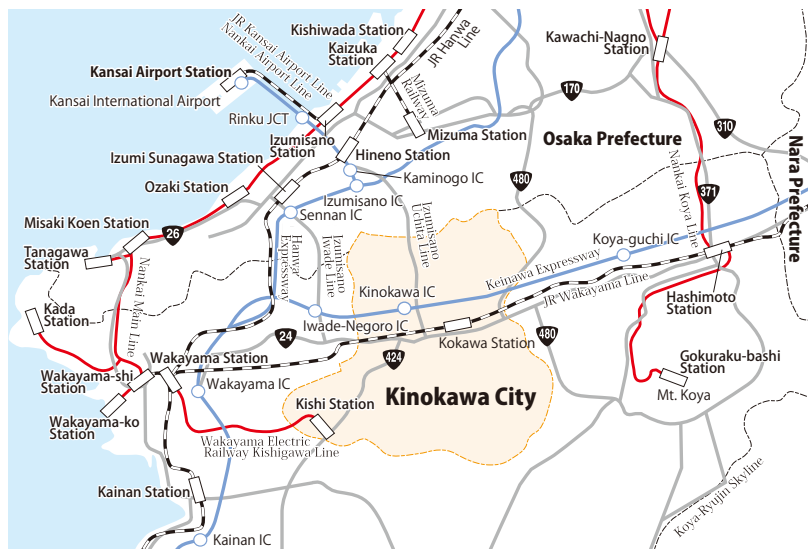
⑭ Seishu-no-Sato Michi-no-Eki Roadside Rest Area



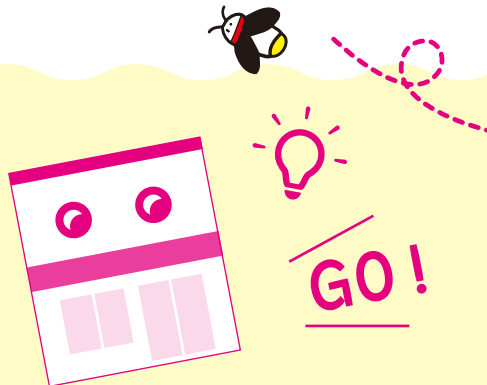
⑮ Tatsu-no-Toi



⑯ Momoyama Local Specialties Center



## The three things we can do at the Kinokawa City Tourist Information Center.



## 1 Planning and selling local-led travel packages (optional tour).

At the Tourist Information Center, we are plan and sell travel packages, which offer gourmet cuisine, sightseeing and experiences in Kinokawa City.

## 2 Offering tourist information.

Our staff members offer information about sightseeing spots in Kinokawa City. Please feel free to drop in if there is something you want to ask about seasonal recommendations, local cuisine and nice spots to visit.

### 3 Selling local specialties.

The attached shop deals with the local specialties of Kinokawa City, such as products utilizing our delicious seasonal fruits.



Kinokawa Fruits Tourism Bureau

802-1 Koudo Kishigawa-cho Kinokawa-shi Wakayama-ken  
(Kinokawa City Tourist Information Center)

**TEL** 0736-79-3700

**FAX** 0736-79-3703

Homepage <https://www.kinokawa-dmo.com>